

# Towels with Indigo Windows

*Weave different patterns using just one set-up and create your own windows.*

## STRUCTURE

Interchanging doubleweave, plain weave/3/1 twill and 1/3 twill  
8 shafts and 10 pedals. Mounting: countermarch

WARP 22/2 Nialin (cottolin) indigodyed, ca 6600 m/kg  
or blue 2029, light blue 2027

Bockens yarns, Holma-Helsingland

WEFT as for the warp

SELVEDGES 2 unentered ends on either side:  
right side: light blue, left side: dark blue  
2 ends of the same colour in a heddle and dent  
4 times on either side = 10 ends

REED 50/10, 1 end to a heddle and 2 ends to a dent

SETT 10 ends/cm, 5 ends in each layer

WIDTH IN REED 45.2 cm

FINISHED WIDTH ca 40 cm

WEFT SETT 10 picks/cm, 5 picks in each layer

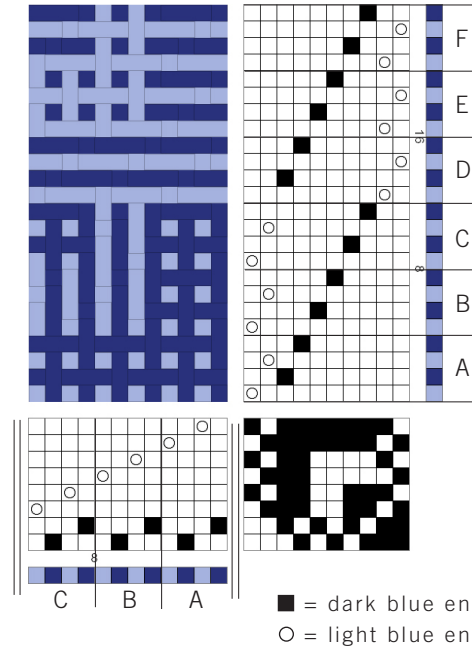
NR. OF ENDS 452 including selvedges, 20 ends

226 ends of each colour

YARN REQUIRED

per metre of warp 35 g of each colour

weft per metre 35 g of each colour



The hems are woven using weft pattern A repeated 8 times.

A B C weaves as dark indigo blue, double cloth and 3/1 twill. 3/1 twill creates the vertical lines.

D E F weaves as light indigo blue double cloth and 1/3 twill. 1/3 twill creates the horizontal lines.

### WARP SEQUENCE

floating selvedge	2																			2	4	
light blue		2		2		1	2		2													224
dark blue				2		2	1		2		2		2									224
		selvedges										x 216					selvedges					= 452

threading plan	selvedge A	A	B	C	B	C	B	A	B	C	B	C	B	C	B	A	B	C	B	C	B	C	B
	x1	x8	x1	x3	x5	x3	x1	x5	x1	x3	x2	x1	x2	x3	x1	x5	x1	x5	x3	x2	x3	x5	x1
		Check 1 = 84 ends						Check 2 = 72 ends						Check 3, middle = 100 ends									

threading plan	A	B	C	B	C	B	C	B	A	B	C	B	C	B	A	selvedge A
	x5	x1	x3	x2	x1	x2	x3	x1	x5	x1	x3	x5	x3	x1	x8	x1
	Check 4 = 72 ends								Check 5 = 104 ends							

treading	hem	1	2	3	4	5	6	7	8	9	10	11	12	13	14	15	16	17	18	19	20	21	22	23	24	25	26	hem
A	x8	x2		x2		x2				x2		x2		x2														x8
B			x1		x1		x5		x5		x1		x1															
C								x5																				
D														x2		x2		x2				x2		x2		x2		
E															x1		x1			x5		x5		x1		x1		
F																					x5							
		Check 1													Check 2													

Weave 5 checks, start and end with hems.

