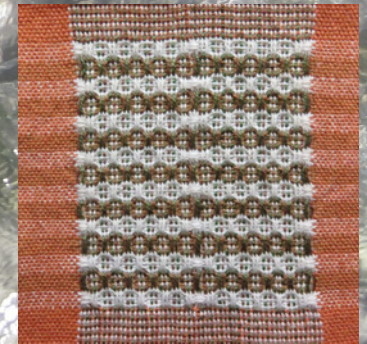
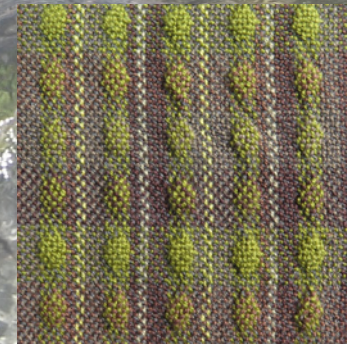
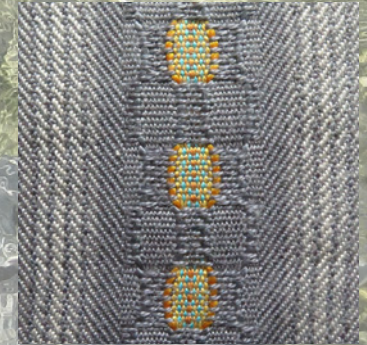
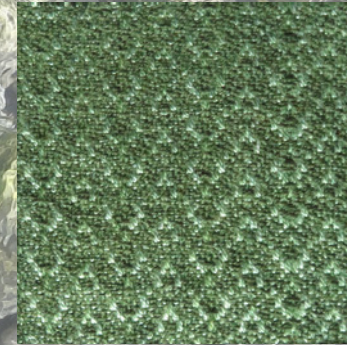
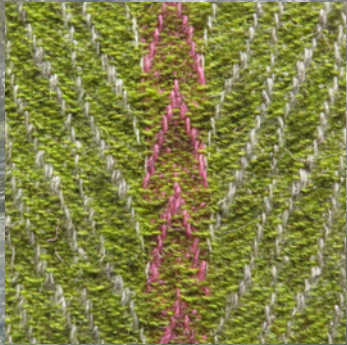
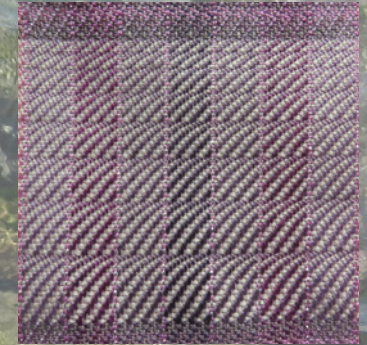
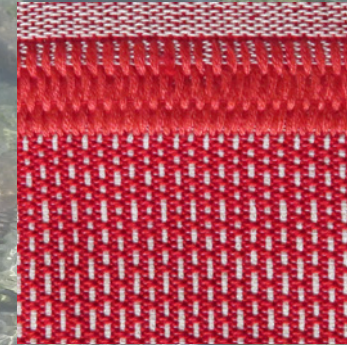
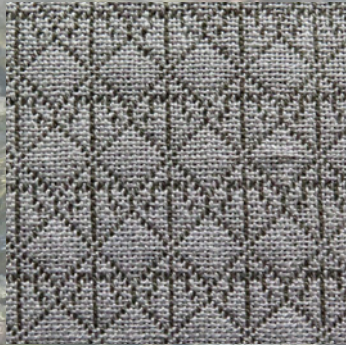


# Woven Rockpools

# Calendar 2017

## Weave Designers

Sue Briggs  
Marilyn Burton  
Pam Hall  
Andrea Klar  
Gillian Militis  
Janet Phillips  
Maggie Roberts  
Joan Scriven  
Christine Wheeler  
Mirja Woollard



# January 2017

Monday	Tuesday	Wednesday	Thursday	Friday	Saturday	Sunday
26	27	28	29	30	31	01
02 New Year's Day (Observed)	03	04	05	06	07	08
09	10	11	12	13	14	15
16	17	18	19	20	21	22
23	24	25	26	27	28	29
30	31	01	02	03	04	05



© Nigel Phillips

# Northern Green Chiton

Designed and hand woven by

**PAM HALL**

[www.pamhalldesigns.com](http://www.pamhalldesigns.com)

8 shaft Wavy Twill and Point Twill

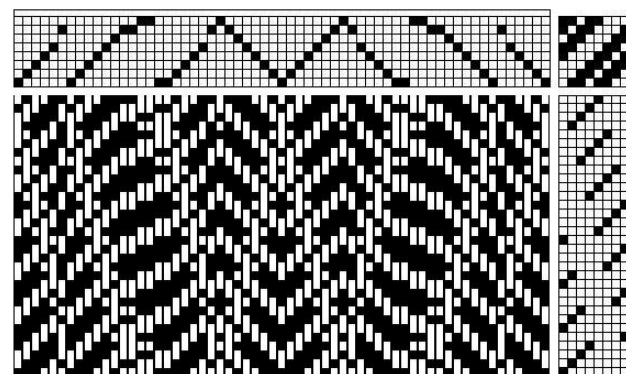
Warp: 20 ends per inch.

1/4nm Fornsider Herdwick/Blue Faced Leicester natural and hand dyed.

2/10nm Worsted, white.

Weft: 22 picks per inch.

1/4nm Fornsider Herdwick/Blue Faced Leicester, hand dyed.



© Pam Hall

# February 2017

Monday	Tuesday	Wednesday	Thursday	Friday	Saturday	Sunday
30	31	01	02	03	04	05
06	06	08	09	10	11	12
13	14	15	16	17	18	19
20	21	22	23	24	25	26
27	28	01	02	03	04	05
06	07	08	09	10	11	12

# Strawberry Anemone

Designed and hand woven by  
**SUE BRIGGS**

Lampas Weave

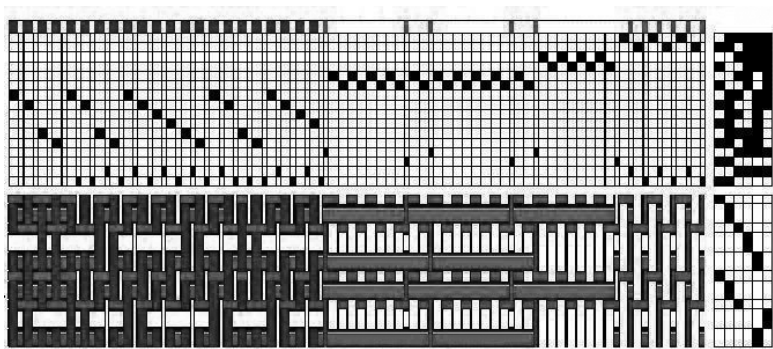
Ground warp: 28 ends per inch.  
12/2nm Mercerised Cotton.  
Pattern warp: Sett varies across cloth 28 epi – 3 epi.  
Polyester Sewing thread.

Weft: 24 picks per inch.  
Ground weft: 12/2nm Mercerised Cotton.  
Pattern weft: 12/2nm Mercerised Cotton - four fold.

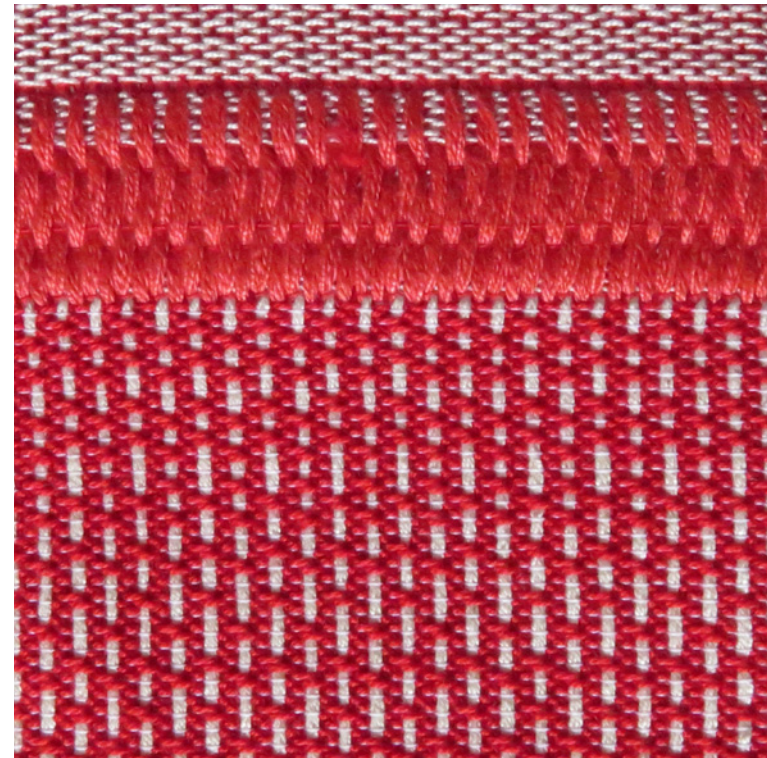
(Cloth is displayed at 90°. Weft as warp)



© Nigel Phillips



© Sue Briggs



# March 2017

Monday	Tuesday	Wednesday	Thursday	Friday	Saturday	Sunday
27	28	01	02	03	04	05
06	07	08	09	10	11	12
13	14	15	16	17	18	19
20	21	22	23	24	25	26
27	28	29	30	31	01	02
03	04	05	06	07	08	09



© Nigel Phillips

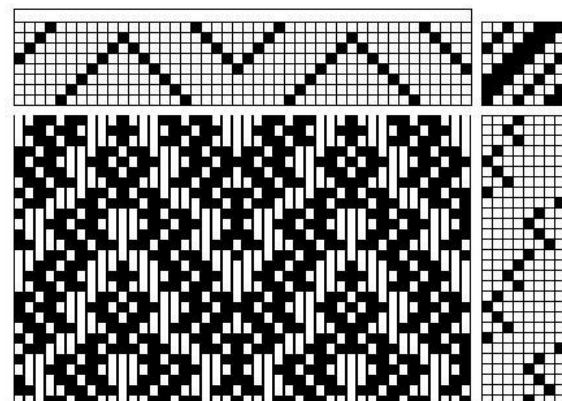
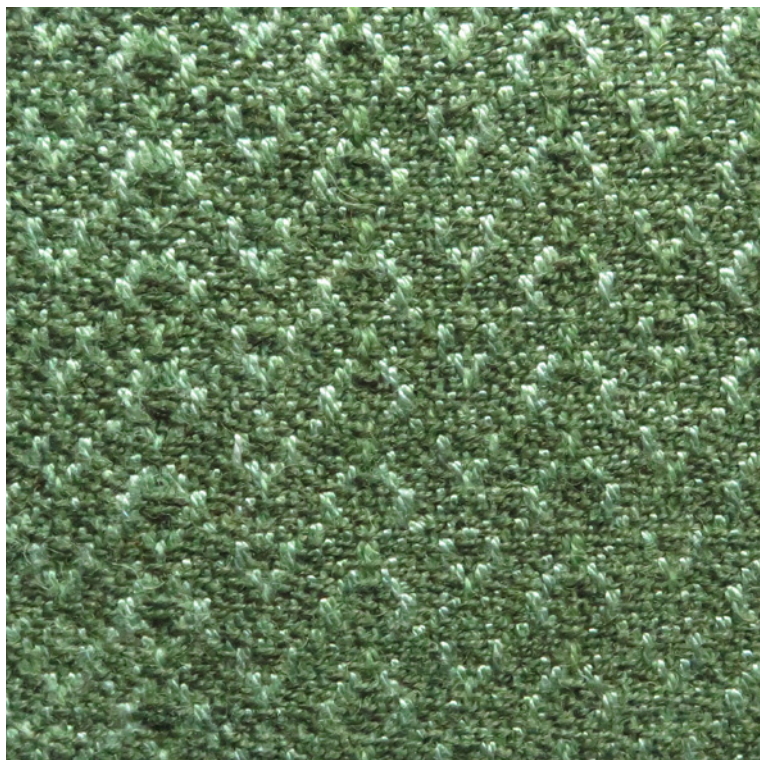
# Greenleaf Worm

Designed and hand woven by  
**CHRISTINE WHEELER**

8 shaft Twill

Warp: 24 ends per inch.  
20/2nm Silk, hand dyed.  
2/18nm Worsted wool, hand dyed.

Weft: 24 picks per inch.  
2/18nm Worsted wool, hand dyed.



© Christine Wheeler

# April 2017

Monday	Tuesday	Wednesday	Thursday	Friday	Saturday	Sunday
27	28	29	30	31	01	02
03	04	05	06	07	08	09
10	11	12	13	14 Good Friday	15	16
17 Easter Monday	18	19	20	21	22	23
24	25	26	27	28	29	30
01	02	03	04	05	06	07



# Frosty Sea Mat

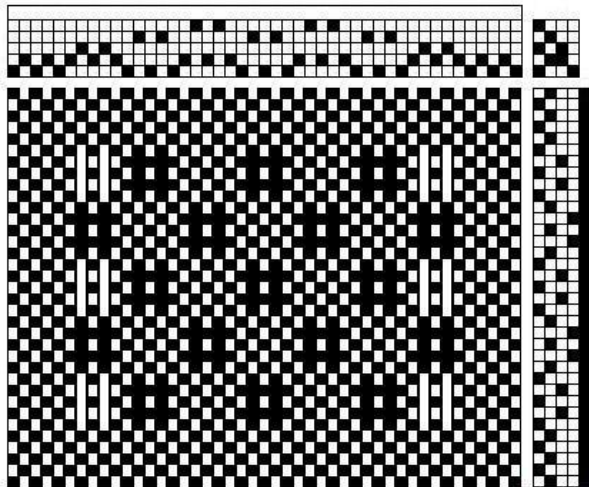
Designed and hand woven by

**MAGGIE ROBERTS**

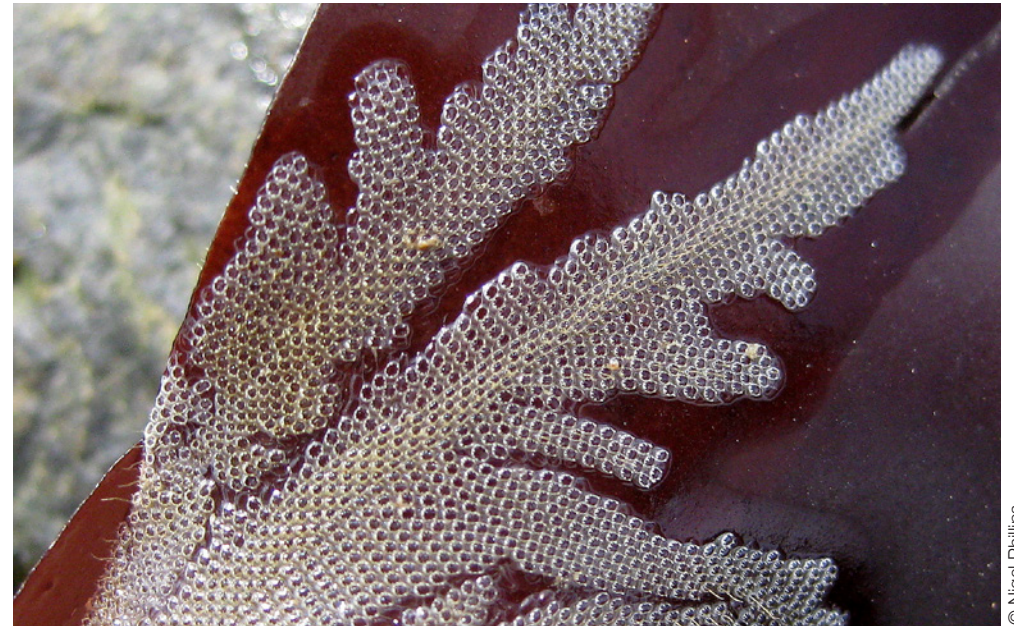
Colour and Weave Effect on Huck Lace

Warp: 40 ends per inch.  
2/16 Cotton white alternating with  
2/16 Cotton brown or green, hand dyed.

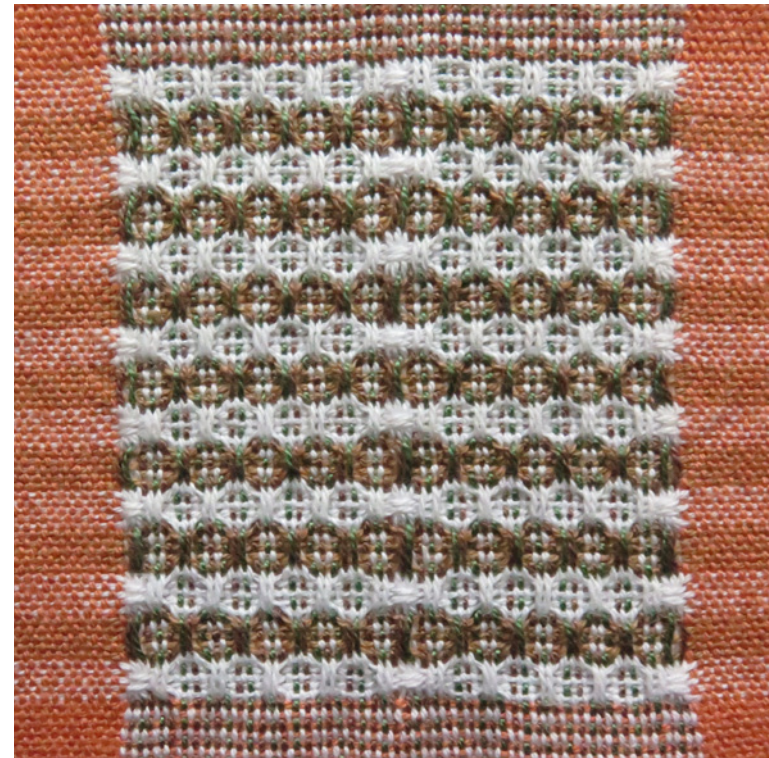
Weft: 24 picks per inch.  
2/16 Cotton.  
5 picks white/5 picks brown.



© Maggie Roberts



© Nigel Phillips



# May 2017

Monday	Tuesday	Wednesday	Thursday	Friday	Saturday	Sunday
01 Early May Bank Holiday	02	03	04	05	06	07
08	09	10	11	12	13	14
15	16	17	18	19	20	21
22	23	24	25	26	27	28
29 Spring Bank Holiday	30	31	01	02	03	04
05	06	07	08	09	10	11



© Nigel Phillips

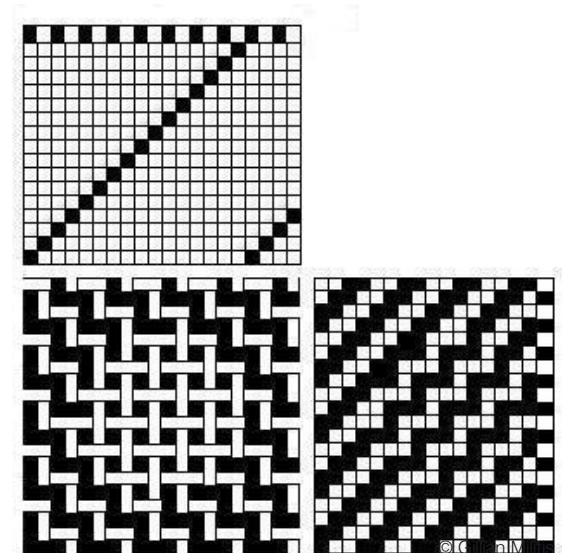
# Bladder Wrack

Designed and hand woven by  
**GILLIAN MILITIS**

Double Plain with 2/2 Twill

Warp: 30 ends per inch.  
2/8 Cotton alternating with 2/40nm Merino and Lycra.

Weft: 30 picks per inch.  
2/8 Cotton alternating with 2/40nm Merino and Lycra.



# June 2017

Monday	Tuesday	Wednesday	Thursday	Friday	Saturday	Sunday
27	28	29	01	02	03	04
05	06	07	08	09	10	11
12	13	14	15	16	17	18
19	20	21	22	23	24	25
26	27	28	29	30	01	02
03	04	05	06	07	08	09

# Blue Rayed Limpet

Designed and hand woven by

**JANET PHILLIPS**

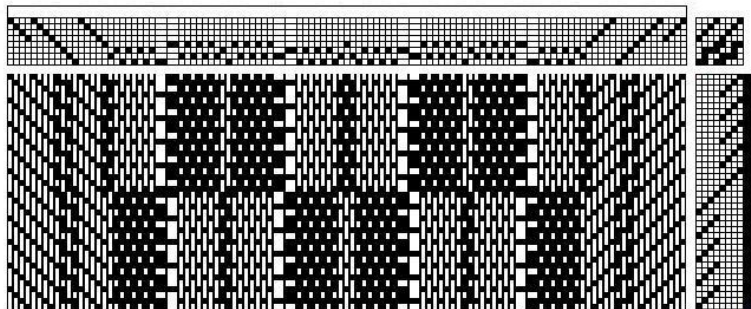
[www.janetphillips-weaving.co.uk](http://www.janetphillips-weaving.co.uk)

4 shaft Interchanging Double Plain with 3/1 Twill (woven as 1/3 Twill)

Warp: 48 ends per inch.  
20/2nm Silk, hand dyed.  
60/2nm Silk, hand dyed.  
3/1 Fantasy Silk, hand dyed.

Weft: 28 picks per inch.  
20/2nm Silk, hand dyed.

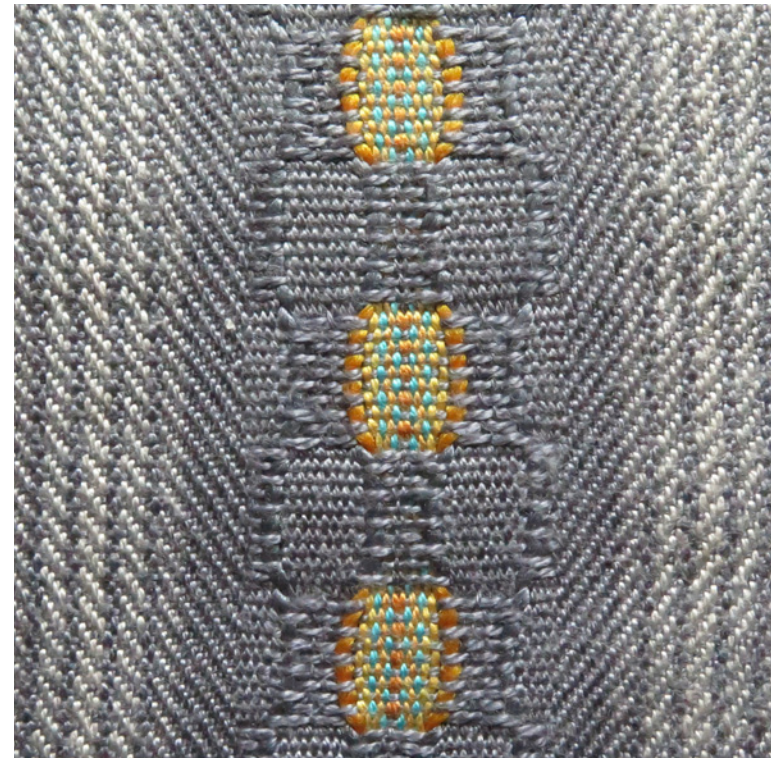
(Cloth displayed back-up)



© Janet Phillips



© Nigel Phillips



# July 2017

Monday	Tuesday	Wednesday	Thursday	Friday	Saturday	Sunday
26	27	28	29	30	01	02
03	04	05	06	07	08	09
10	11	12	13	14	15	16
17	18	19	20	21	22	23
24	25	26	27	28	29	30
31	01	02	03	04	05	06



© Nigel Phillips

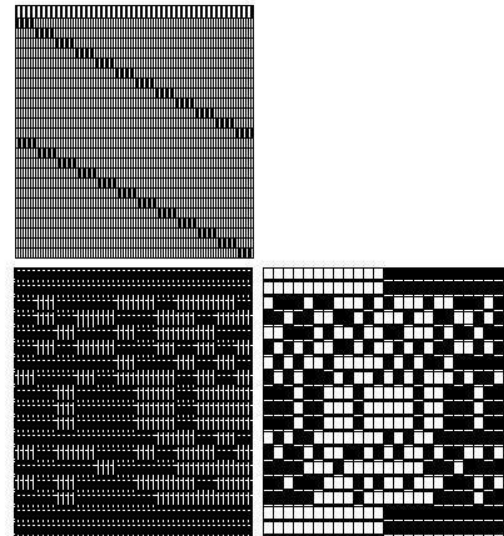
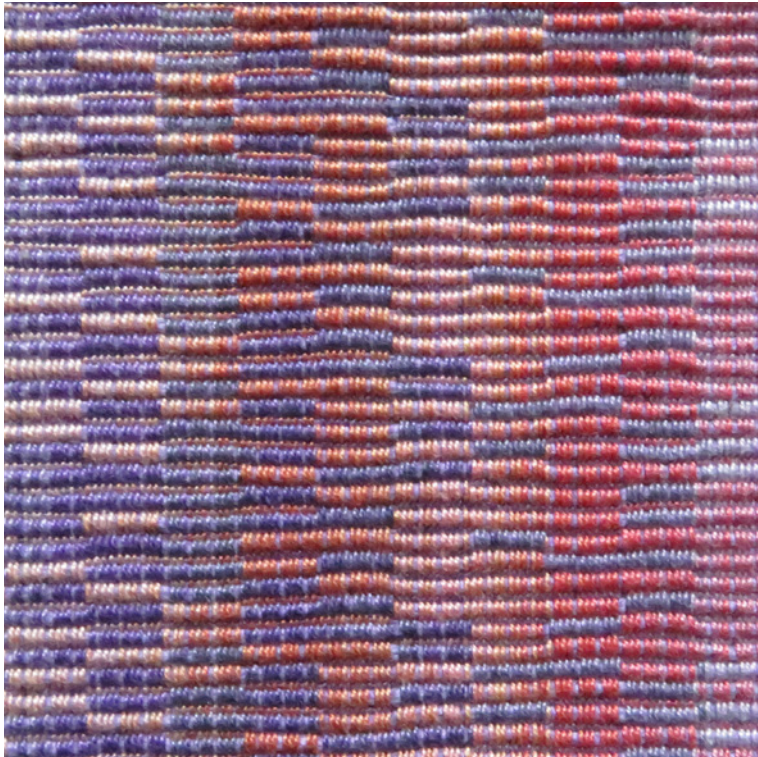
# Variegated Scallop

Designed and hand woven by  
**MARILYN BURTON**

Repp

Warp: 60 ends per inch.  
2/12 Mercerised Cotton, hand dyed.

Weft: 16 picks per inch.  
2/20 Mercerised Cotton, hand dyed.  
2/3 Mercerised Cotton doubled, hand dyed.



© Marilyn Burton

# August 2017

Monday	Tuesday	Wednesday	Thursday	Friday	Saturday	Sunday
31	01	02	03	04	05	06
07	08	09	10	11	12	13
14	15	16	17	18	19	20
21	22	23	24	25	26	27
28 Summer Bank Holiday	29	30	31	01	02	03
04	05	06	07	08	09	10



# Kiwi Barnacle

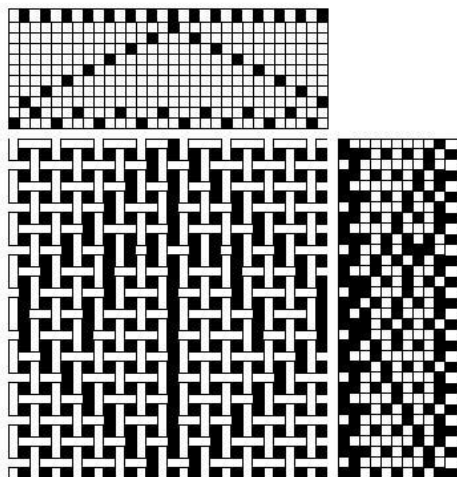
Designed and hand woven by

**MIRJA WOOLLARD**

Stitched Double Cloth

Warp: 32 ends per inch.  
16/2 Linen.  
2/6 Mercerised Cotton.

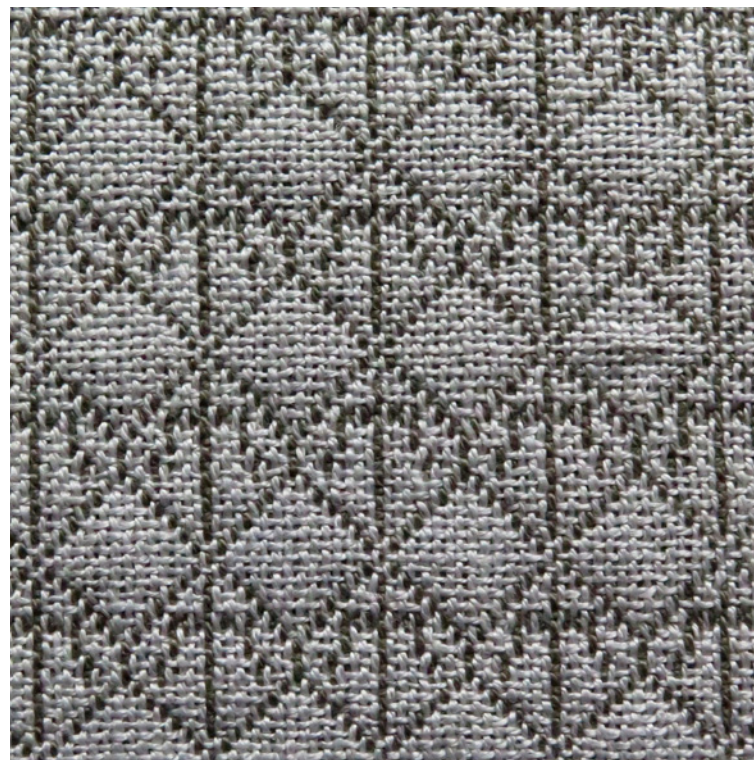
Weft: 32 picks per inch.  
16/2 Linen.  
2/6 Mercerised Cotton.



© Mirja Woollard



© Nigel Phillips



# September 2017

Monday	Tuesday	Wednesday	Thursday	Friday	Saturday	Sunday
28	29	30	31	01	02	03
04	05	06	07	08	09	10
11	12	13	14	15	16	17
18	19	20	21	22	23	24
25	26	27	28	29	30	01
02	03	04	05	06	07	08



© Nigel Phillips

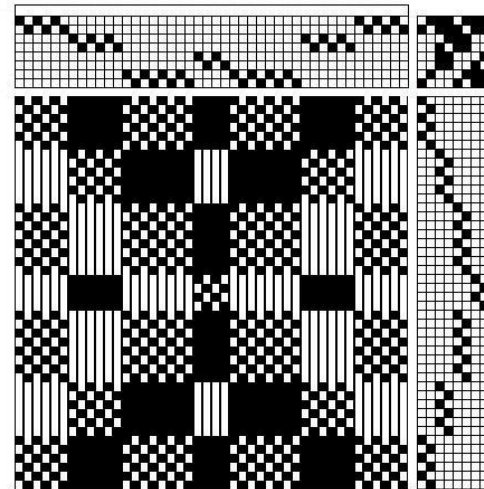
# Moon Jelly Fish

Designed and hand woven by  
**ANDREA KLAR**

Deflected Double Cloth

Warp: 25 picks per inch.  
17/2nm Lambswool.

Weft: 25 picks per inch.  
17/2nm Lambswool.



© Andrea Klar

# October 2017

Monday	Tuesday	Wednesday	Thursday	Friday	Saturday	Sunday
25	26	27	28	29	30	01
02	03	04	05	06	07	08
09	10	11	12	13	14	15
16	17	18	19	20	21	22
23	24	25	26	27	28	29
30	31	01	02	03	04	05

# Lesser Sand Eel

Designed and hand woven by

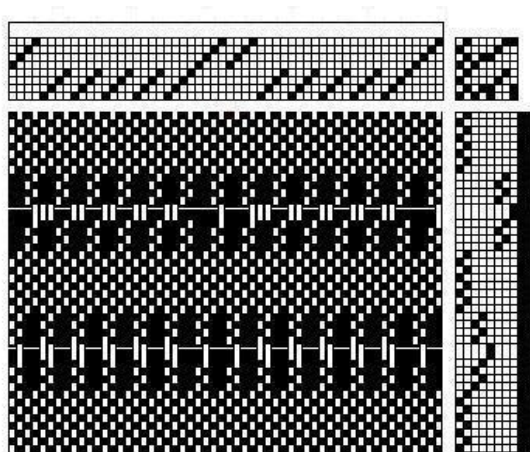
**JANET PHILLIPS**

[www.janetphillips-weaving.co.uk](http://www.janetphillips-weaving.co.uk)

Bedford Cord and Plain Weave

Warp: 30 ends per inch.  
30/1nm Over-twisted wool.

Weft: 30 picks per inch (average).  
2/48 Worsted - Water.  
Trans199 Polypropylene - Water.  
8/2 Tencel - Eel.  
2/2 Wool and Cashmere - Wadding.



© Janet Phillips



© Nigel Phillips



# November 2017

Monday	Tuesday	Wednesday	Thursday	Friday	Saturday	Sunday
30	31	01	02	03	04	05
06	07	08	09	10	11	12
13	14	15	16	17	18	19
20	21	22	23	24	25	26
27	28	29	30	01	02	03
04	05	06	07	08	09	09



© Nigel Phillips

# Common Otter Shell

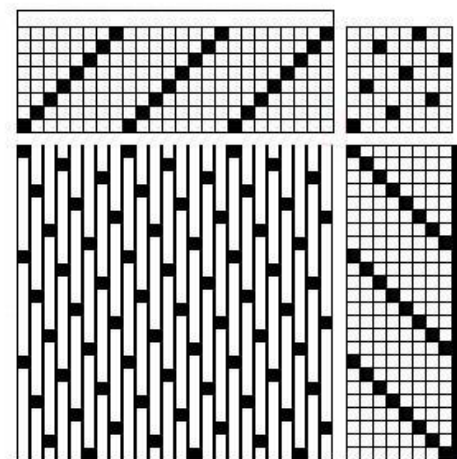
Designed and hand woven by  
**JOAN SCRIVEN**

8 end Satin (woven as an 8 end Sateen)

Warp: 30 ends per inch.  
Variety of Wool, Cotton and Silk yarns.

Weft: 30 picks per inch.  
2/28nm Cashmere doubled.

(Cloth displayed back-up)



© Joan Scriven

# December 2017

Monday	Tuesday	Wednesday	Thursday	Friday	Saturday	Sunday
25	26	27	28	01	02	03
04	05	06	07	08	09	10
11	12	13	14	15	16	17
18	19	20	21	22	23	24
25 Christmas Day	26 Boxing Day	27	28	29	30	31
01 New Year's Day	02	03	04	05	06	07



# Grey Top Shell

Designed and hand woven by

**JANET PHILLIPS**

[www.janetphillips-weaving.co.uk](http://www.janetphillips-weaving.co.uk)

4 shaft Wavy Twill

Warp: 64 ends per inch.

60/2nm Silk, white.

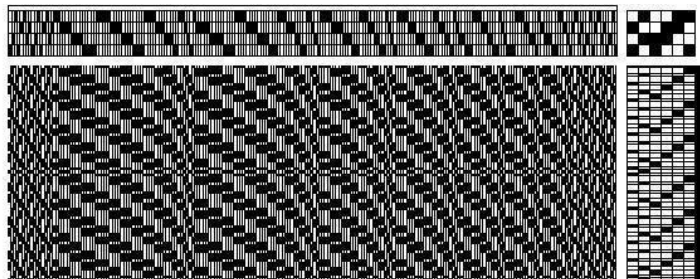
70/2nm Silk, pink.

2/16 Cotton, grey, grape and amethyst.

Weft: 32 picks per inch.

20/2nm Silk, hand dyed, alternating with 2/16 Mercerised Cotton.

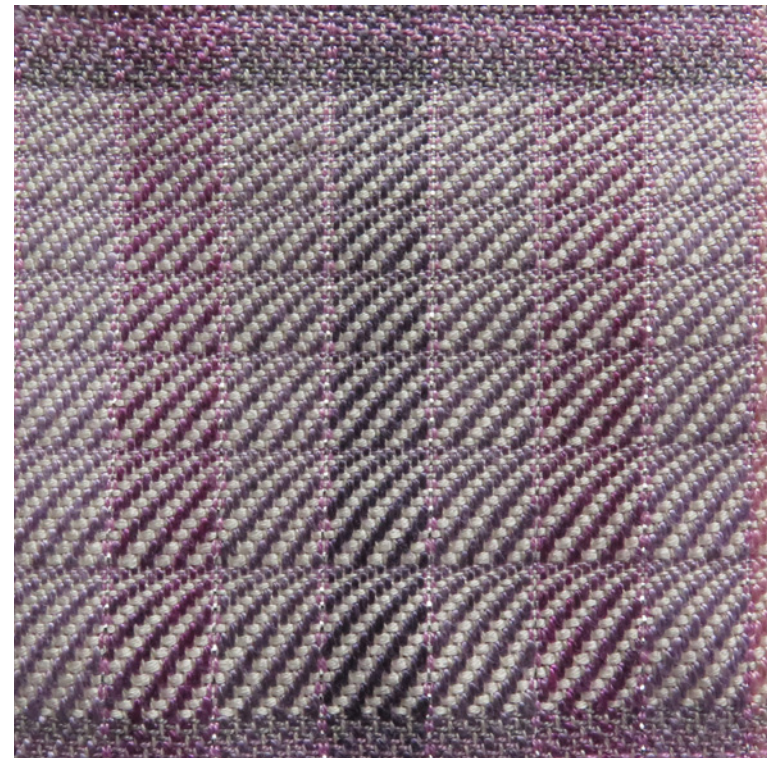
(Cloth is displayed at 90°. Weft as warp)



© Janet Phillips



© Nigel Phillips



All hand weavers contributing to this calendar are graduates of the Janet Phillips' Master Class in Weave Design

Janet  
Phillips [www.janetphillips-weaving.co.uk](http://www.janetphillips-weaving.co.uk)

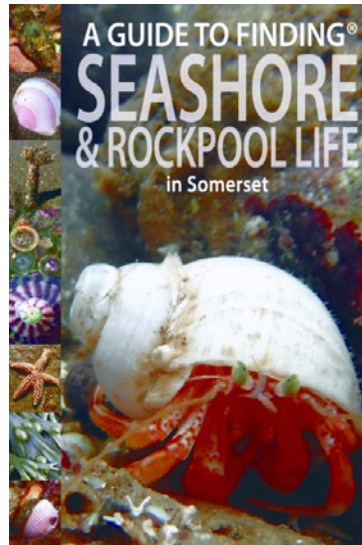
Rockpool inspirations taken from:

A Guide to Finding Seashore  
& Rockpool Life in Somerset

by Nigel Phillips

ISBN: 978-1-874357-68-1  
[www.naturebeaurea.co.uk/bookshop/](http://www.naturebeaurea.co.uk/bookshop/)

All photographs © Nigel Phillips



Supporting

**DIABETES UK**  
CARE. CONNECT. CAMPAIGN.

Published by Natural Time Out Publications.

Printed by First Design Print Web.

For other woven calendars visit  
Lily Weisgerber-Peters in Luxembourg.  
[www.weaving.lu](http://www.weaving.lu)